



1. Technical description.

The **RLB8** fuse strip is designed for power distribution in low-voltage systems requiring voltage in the range **10 V ÷ 56 V DC** (e.g. RACK uninterruptible power supply of the ROUPS series, etc.). It is fitted with the DC INPUT for power supply and 8 independently protected outputs AUX1 ÷ AUX8. Each AUX output is equipped with short-circuit protection (SCP), in the form of a F 2 A fuse. Output state is indicated by L1 ÷ L8 LEDs. Fuse failure is indicated by switching off the appropriate LED: L1 for AUX1, etc. Additionally, in the case of failure, the **ALARM** relay output and the **ALARM** LED are activated. The **ALARM** output can be used for remote control of the module, e.g. external optical indication. The fuse strip is located in an enclosure adapted for mounting in **RACK** standard 19" cabinets.

2. Description of the fuse strip.

2.1. Description of components and connectors of the fuse strip.

Element no. [fig. 2]	Description
[1]	L1 ÷ L8 green LEDs
[2]	F1 ÷ F8 fuses in the AUX (+) circuits
[3]	AUX1 ÷ AUX8 independently secured outputs, common terminal COM (-)
[4]	ALARM failure technical output, relay
[5]	DC INPUT – the fuse strip's power supply input
[6]	ALARM (red) LED indicating failure

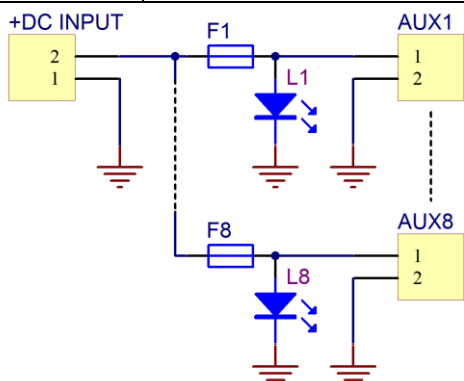


Fig. 1. Electrical diagram.

3. Specifications.

Supply voltage	10 V ÷ 56 V DC (-2%/+2%)
Output voltage	$U_{AUX} = U_{IN}$ (equal to supply voltage)
Current consumption	20mA ÷ 50mA @ $U_{in}=10 \div 56$ V DC
Number of power inputs	1 (DC INPUT terminals) – cable 4 mm ² max. The set includes 2.5mm ² , 15cm power cords
Number of power outputs	8 (AUX terminals) – 2.5mm ² max. cable
Protections against:	
- a short circuit SCP	- 8 x F 2 A glass fuse
- an overload OLP	- 8 x F 2 A glass fuse
Technical output of failure ALARM	relay type: 1 A @ 30 V DC / 50 V AC
LED indication	- Green LEDs L1 ÷ L8 – outputs status AUX1 ÷ AUX8 - red LED ALARM indicates failure
F1 ÷ F8 fuses	F 2 A
Operating conditions	II environmental class, -10°C ÷ 45°C
Dimensions	W=19", H=2U; 482 x 88 x 74 mm (WxHxD)
Fixing	four-point fixing on the front RACK rails - 4 M6 screws with cage nuts included
Connectors:	
- of power input	Φ0,51 ÷ 2,05 (AWG 24-10) 0,2 ÷ 4mm ²
- of power output	Φ0,51 ÷ 2,05 (AWG 24-12) 0,5 ÷ 2,5mm ²
- technical output	Φ0,51 ÷ 2,05 (AWG 24-12) 0,5 ÷ 2,5mm ²
Declarations, warranty	CE, 2 year from the production date
Net/gross weight	2,0/ 2,1kg

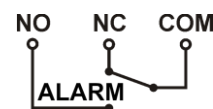
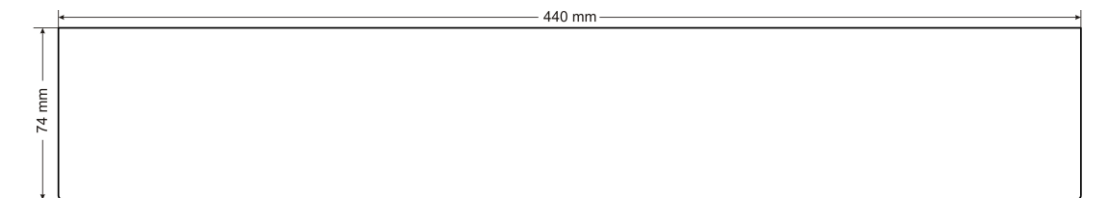


Fig. 3. Electrical diagram of the relay output.

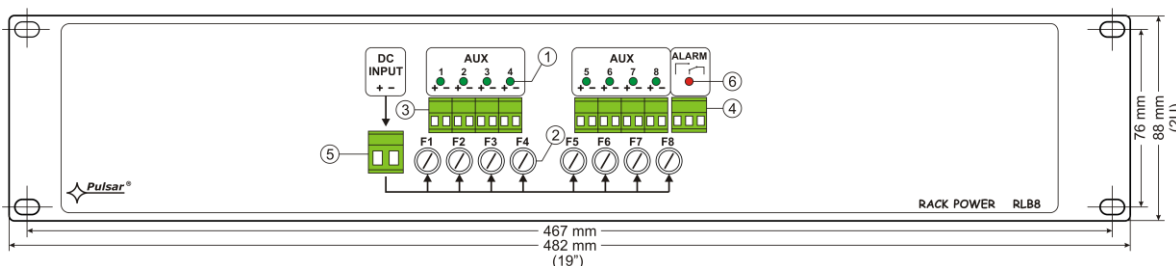


Fig. 2. The view of the fuse strip.

WEEE MARKING

According to the EU WEE Directive – It is required not to dispose of electric or electronic waste as unsorted municipal waste and to collect such WEEE separately.

Pulsar sp. j.

Siedlec 150, 32-744 Łączycza, Poland
Phone (+48) 14-610-19-40, Fax. (+48) 14-610-19-50
e-mail: biuro@pulsar.pl, sales@pulsar.pl
http:// www.pulsar.pl, www.zasilacze.pl